

**TOP TIPS TO KEEP YOU SAFE!**



# Guide to SAFETY



**Scottish & Southern  
Electricity Networks**

# Meet the Power Pack Pals

THE POWER PACK PALS ARE FOUR GREAT FRIENDS WHO WE WILL HELP YOU TO UNDERSTAND WHY ELECTRICITY, THE 'MAGIC POWER', IS VERY IMPORTANT IN OUR WORLD BUT ALSO VERY DANGEROUS, AND SHOULD BE TREATED WITH EXTRA SPECIAL CARE. LET'S MEET THE POWER PACK GANG:



HERE IS PROFESSOR PENELOPE. SHE KNOWS EVERYTHING THERE IS TO KNOW ABOUT ELECTRICITY AND ABOUT STAYING SAFE.



THIS IS PERCY PIGEON. CHECK OUT HIS POWER PACK. HE WORKS WITH PROFESSOR PENELOPE TO FIND ANY PROBLEMS THAT NEED TO BE SORTED.



THIS IS PETER. HE KNOWS HOW TO STAY OUT OF TROUBLE. HE'S GREAT AT PUZZLES.



THIS IS POLLY. SHE'S PETER'S BEST FRIEND. SHE LOVES EXPLORING OUTDOORS.

# LOOK OUT, LOOK UP!

NEVER CLIMB POLES OR  
PYLONS THAT HOLD UP  
ELECTRICITY CABLES. IF YOU  
TOUCH ONE OF THE CABLES  
IT COULD KILL YOU.

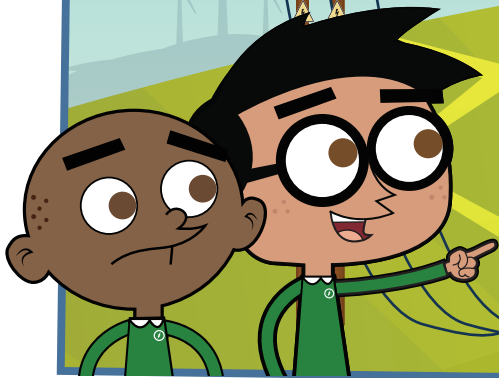
**TOP TIPS**  
TO KEEP YOU  
SAFE OUTSIDE



WATCH OUT WHERE  
YOU GO FISHING.  
ALWAYS LOOK OUT  
AND LOOK UP!  
NEVER FISH NEAR  
ELECTRICITY PYLONS  
OR POWER CABLES



IF YOU SEE BIG CABLES ON THE GROUND STAY FAR AWAY! THESE MIGHT BE LIVE ELECTRICITY CABLES AND ARE VERY DANGEROUS!



FLYING DRONES OR KITES IS GREAT FUN... ..BUT WATCH OUT!

THEY CAN GET CAUGHT UP ON THE ELECTRIC CABLES AND COULD GIVE YOU AN **ELECTRIC SHOCK!**

**WATCH OUT!**

**WHERE YOU GO  
CAMPING.**



**NEVER PITCH YOUR TENT  
ANYWHERE NEAR ELECTRIC  
PYLONS OR POWER LINES.**



**ALWAYS STAY AWAY FROM ELECTRICITY  
SUBSTATIONS. THE EQUIPMENT INSIDE THEM  
IS EXTREMELY POWERFUL AND DANGEROUS.**

**THE  
END**

# TOP TIPS

TO KEEP YOU SAFE AT HOME

EVERYBODY KNOWS THAT ELECTRICITY IS VERY IMPORTANT IN TODAY'S WORLD -YOUR TELEVISION, YOUR GAMES CONSOLE, PHONES AND TABLETS ALL NEED ELECTRICITY TO WORK.

It's The Magic Power!

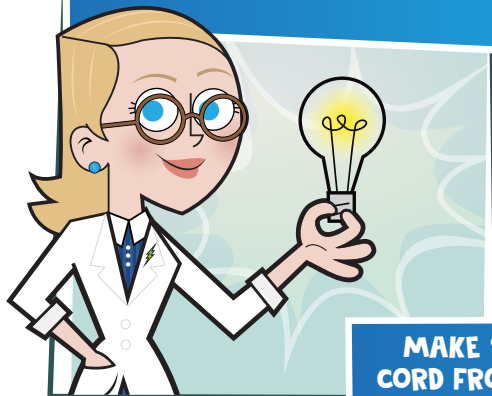
BUT ELECTRICITY IS ALSO DANGEROUS. IT CAN REALLY HURT YOU

WATER CONDUCTS ELECTRICITY. SO IT'S IMPORTANT NEVER TO TOUCH ELECTRICAL APPLIANCES WITH WET HANDS OR YOU COULD GET AN ELECTRIC SHOCK

PLACE YOUR DRINK WELL AWAY FROM ANY ELECTRICAL APPLIANCES. IF THEY ARE KNOCKED OVER YOU COULD GET AN

**ELECTRIC SHOCK!**

**IF YOU NEED TO CHANGE A LIGHTBULB, ALWAYS ASK AN ADULT TO HELP.**



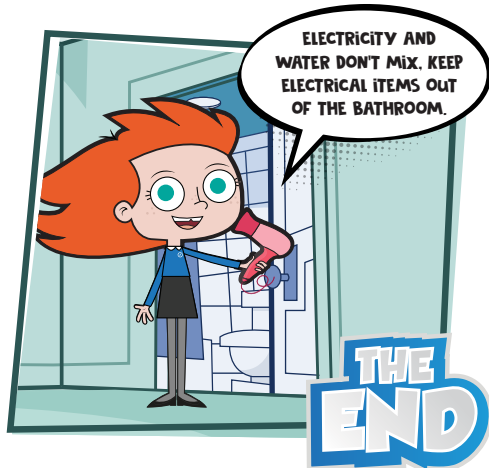
**MAKE SURE YOU DON'T PULL AN ELECTRICAL CORD FROM THE WALL. PULLING ON A CORD CAN DAMAGE THE APPLIANCE, THE PLUG OR THE CABLE.**



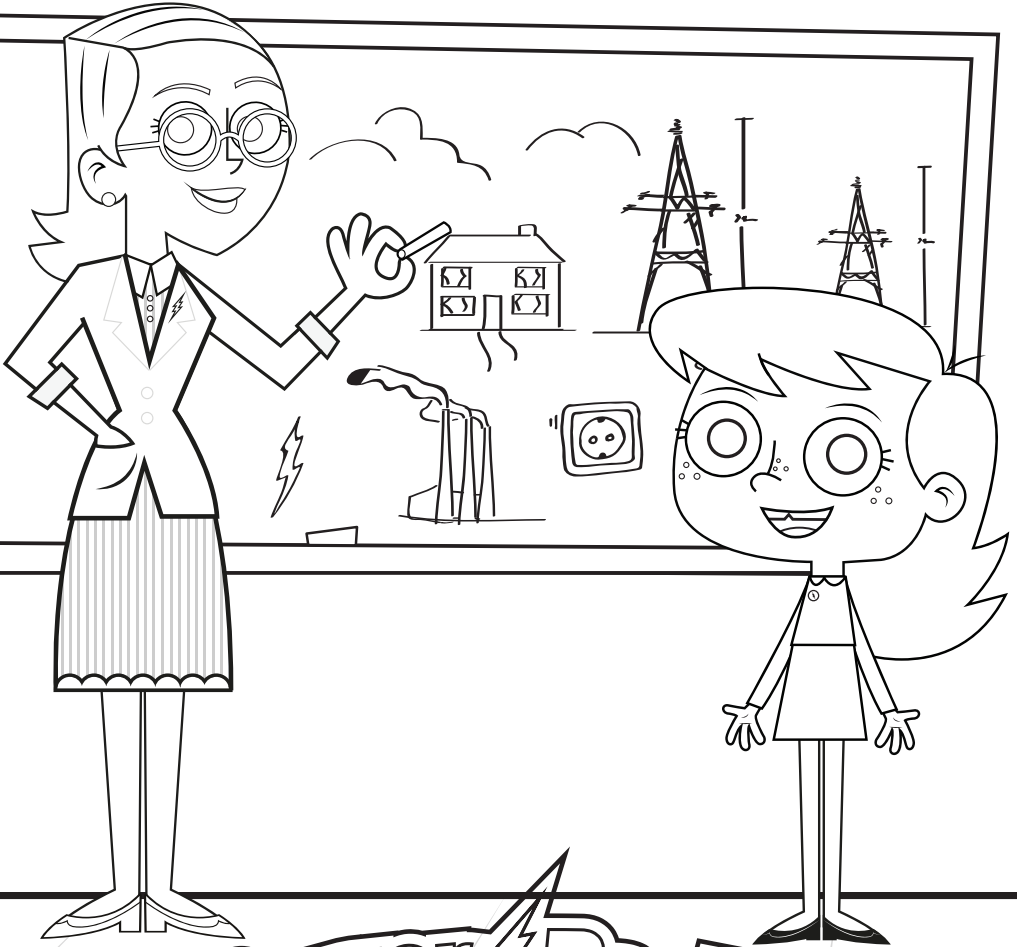
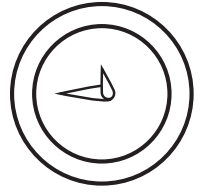
**ALWAYS REMEMBER TO TURN OFF ELECTRICAL ITEMS WHEN YOU'RE NOT USING THEM -**

**ESPECIALLY WHEN YOU GO TO BED!**

**ELECTRICAL CABLES SHOULD BE TUCKED AWAY SAFELY. YOU COULD TRIP OR FALL IF THEY ARE LEFT TRAILING ON THE FLOOR**

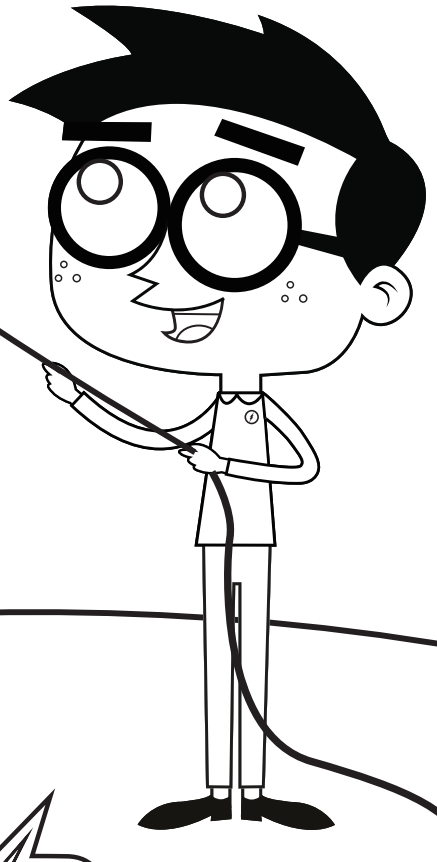


**THE END**



**Power Pack  
PALS**



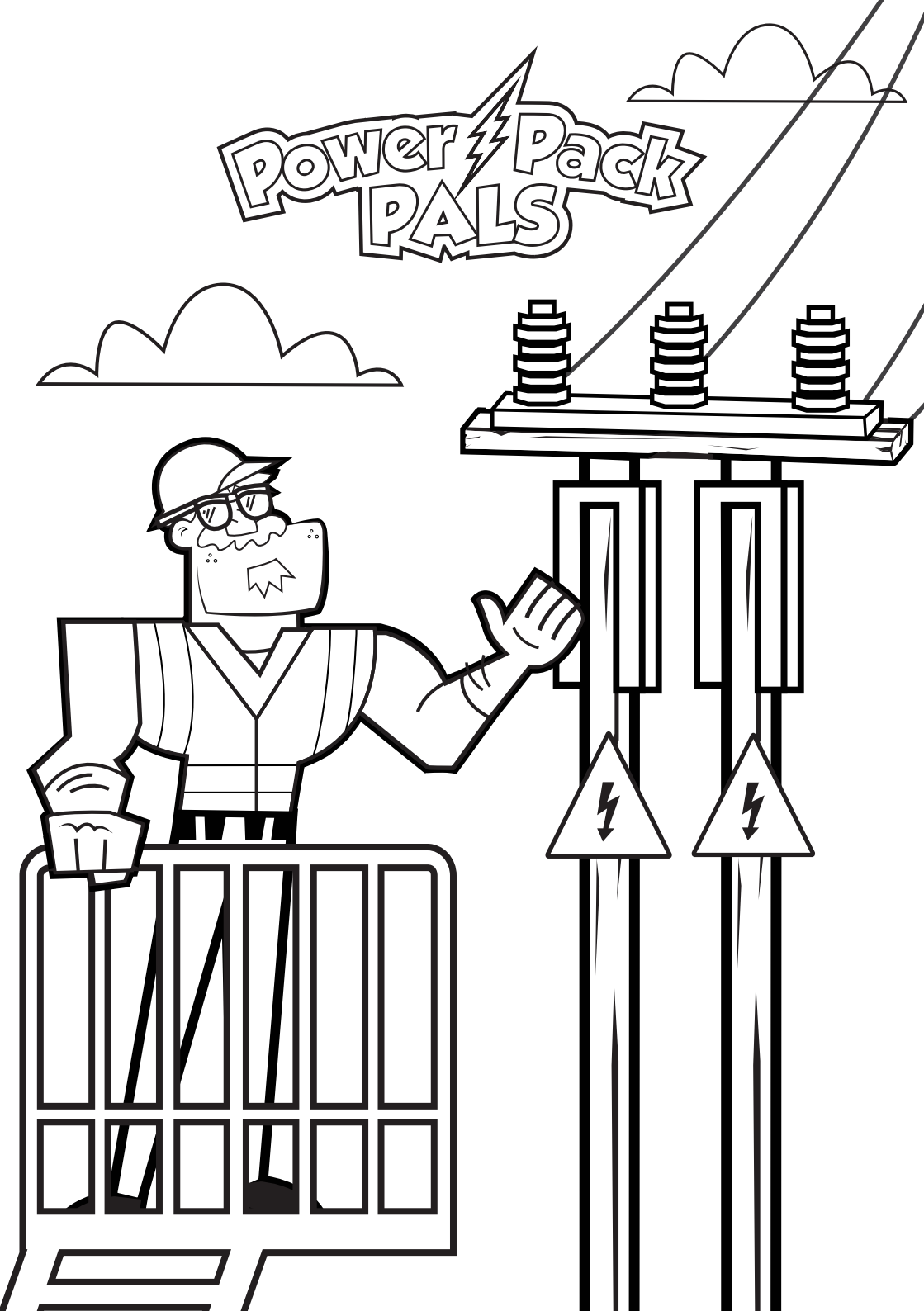


**Power Pack  
PALS**

# Power Pack PALS



# Power Pack PALS





Scottish & Southern  
Electricity Networks



Play our games at  
[www.powerpackpals.com](http://www.powerpackpals.com)